

# Research, educational and other activities at IMID

**Milan Klapka, doc.**

ÚSTAV KONSTRUOVÁNÍ  
Fakulta strojního inženýrství  
VUT v Brně

FME BUT, 30. 5. 2018



# Contents

- Research
- Education
- Coordination

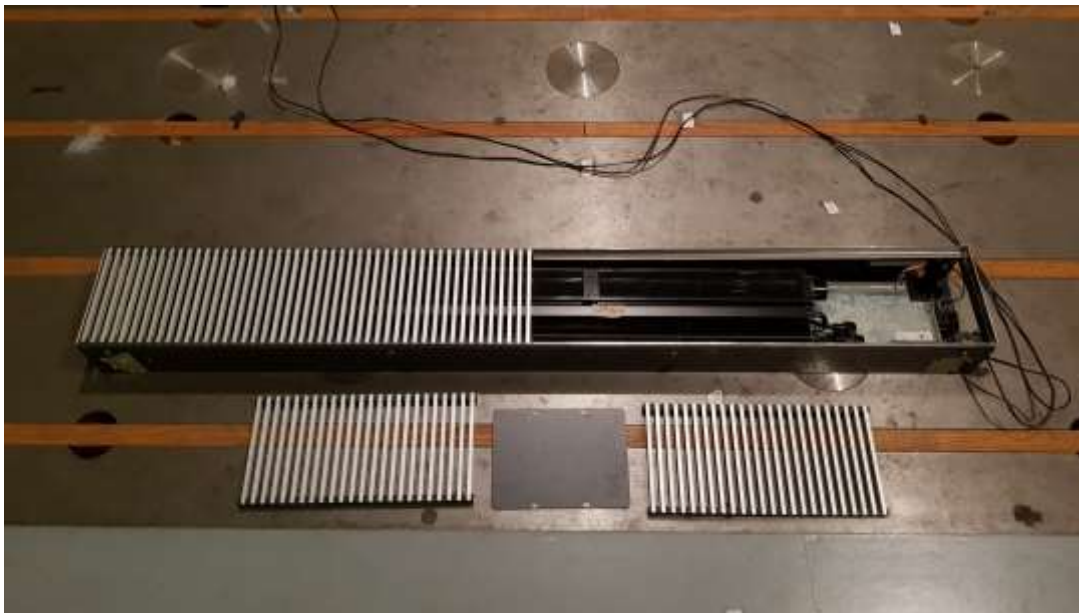


*(Lex Augusteijn)*

# Contractual research

## ISAN radiátory s.r.o.

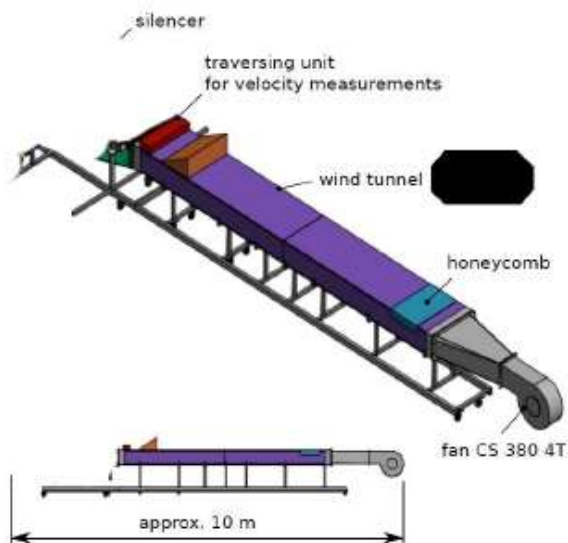
Analysis of acoustic properties of various products of the manufacturer (mostly heat convectors). Verification of noise of the installed units and consulting.



# Contractual research

## SIEMENS A.G.

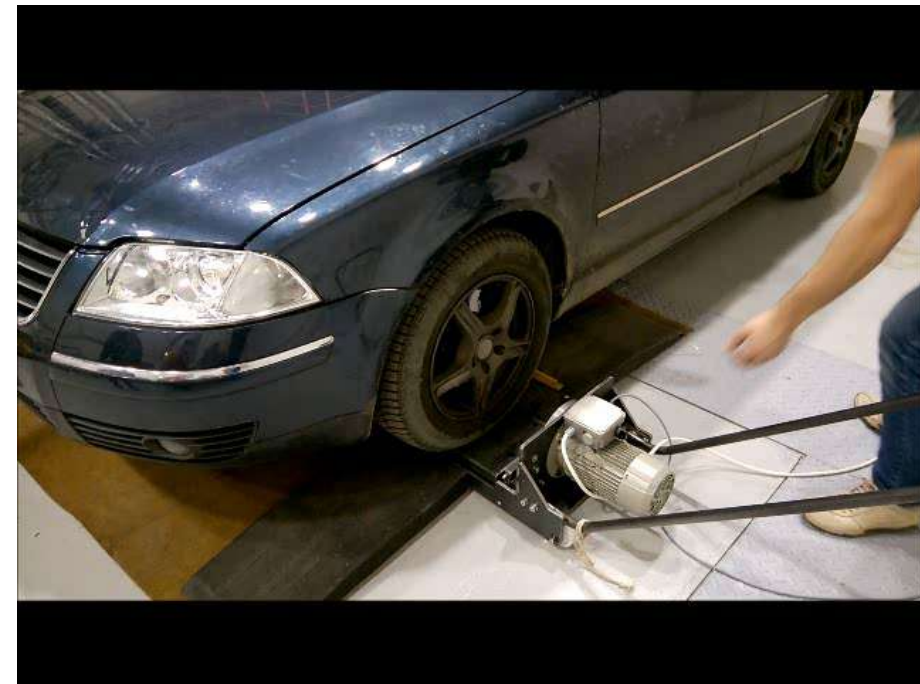
Analysis of acoustic power and acoustic insulation capabilities of the train HVAC silencer. In cooperation with LPTP.



# Applied research

## Development of innovative method for assessment of the car suspension technical condition

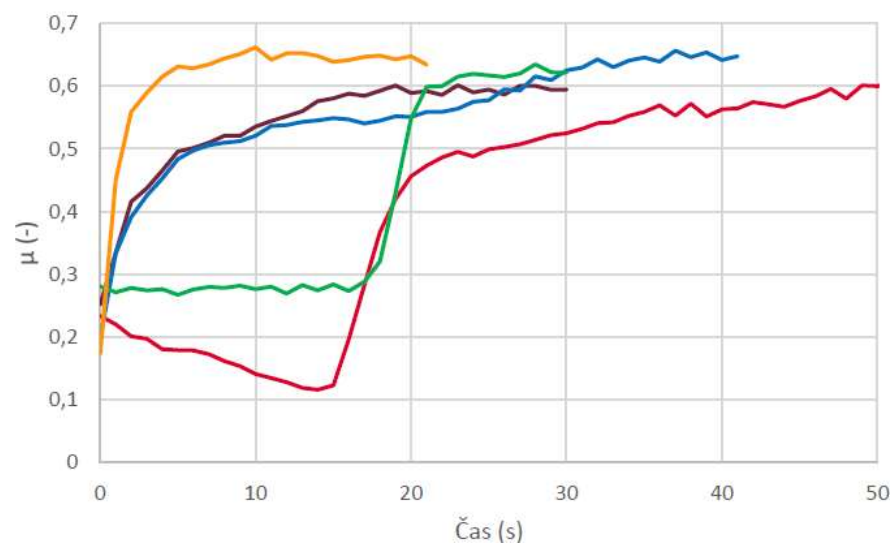
Cooperation with ModularTest s.r.o. Development of testing rigs and methods for technical diagnostics of car suspension.



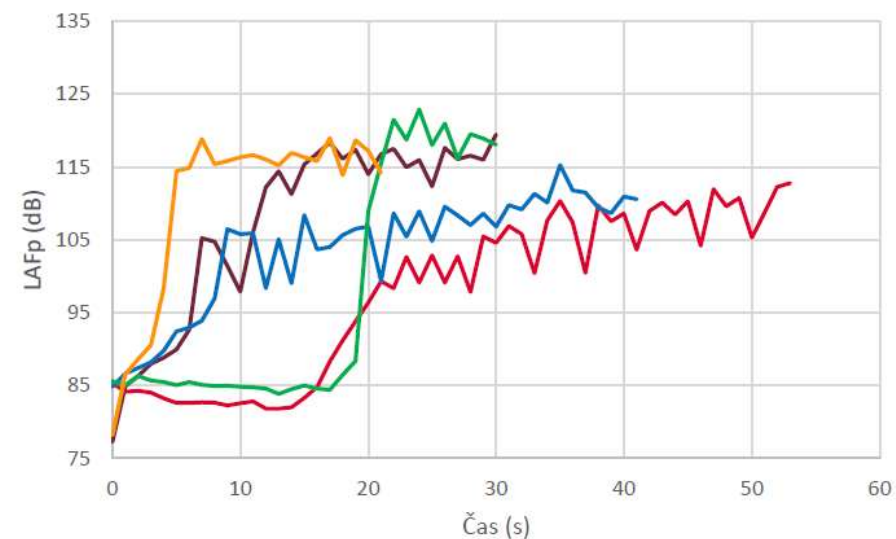
# Applied research

## Study of the noise radiation in rail applications

Cooperation with Tribology group. Study of relation between adhesion and noise. Development of smart device for application of the products for modification of the adhesion.



— B — T — Z — čistá voda — suchý kontakt



— B — T — Z — čistá voda — suchý kontakt

# Education

## Courses in 3rd year of general bachelor's degree programme 5KS and 6KT

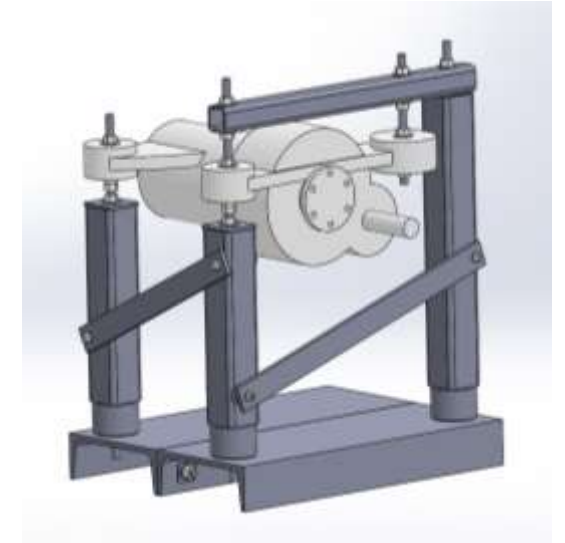
- Teaching practicals regularly and occasionally lectures as well.
- Preparation of the teaching materials.
- Running e-learning support.
- Supervising electronic exams.

## Courses in master degree study – ZKP

- Leader of semestral projects.

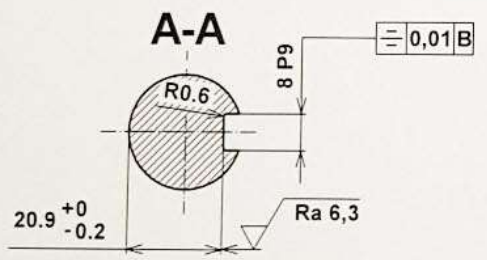
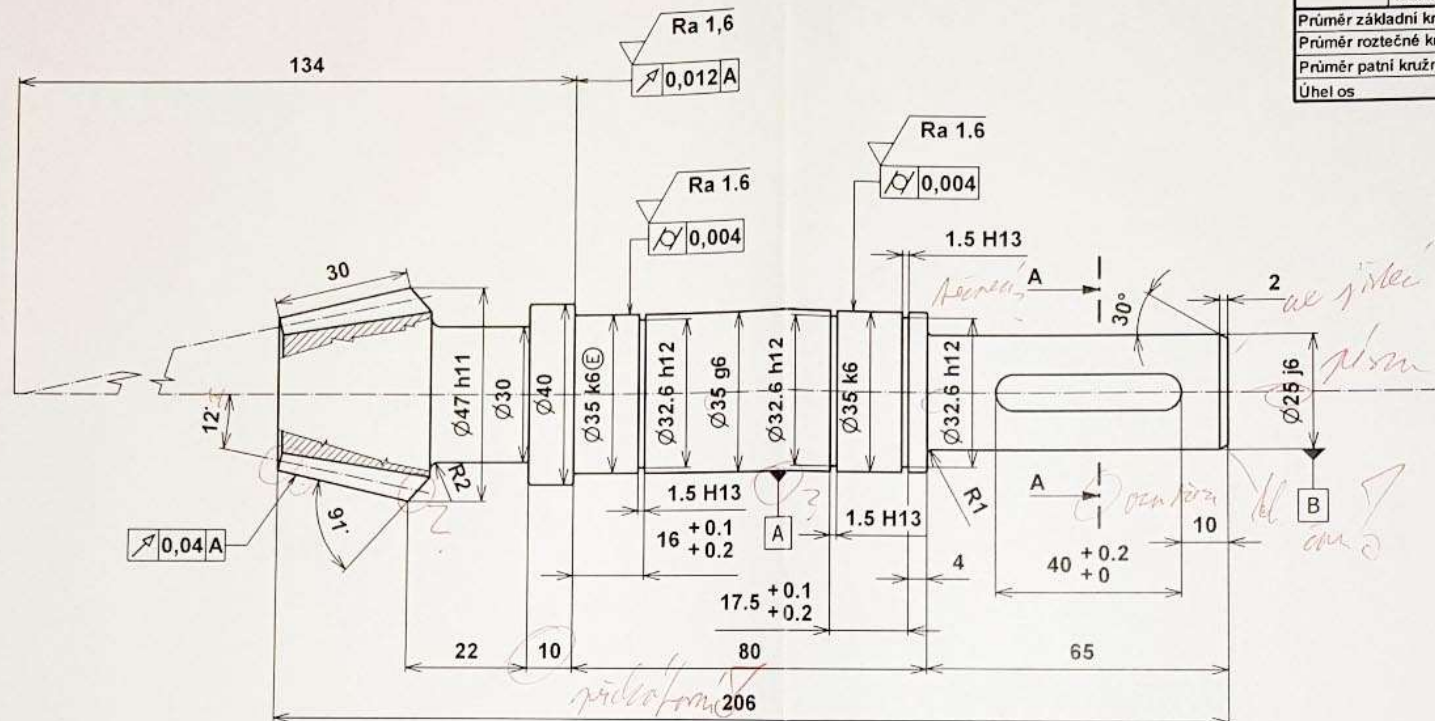
## Supervising diploma and bachelor thesis

Research, educational and other activities at IMID



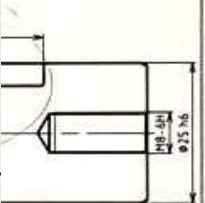
St

Modul	m	2,5	
Počet zubů	z <sub>1</sub>	17	
Normální základní profil	-	CSN 01 4507	
Úhel sklonu boční křivky zuba	β	0°	
Stupeň přesnosti podle	-	2-C-23,1 01451	
číslo výkresu	-	P-3B/17	
	počet zubů	z <sub>2</sub>	76
	vzdálenost os	a	389
Průměr základní kružnice	d <sub>os</sub>	47	
Průměr roztečné kružnice	d <sub>2</sub>	42,5	
Průměr patní kružnice	d <sub>φ</sub>	36,5	
Úhel os	Σ	90°	



NEKOTOVANÉ POLOMÉRY R 0,5  
 BOKY ZUBU KALENÉ NA 605HV

Struktura povrchu: Ra 3,2	Hrany: -0.3 / +0.3	Měřítka 1 : 1	Přesnost: ISO 2768-mH
Materiál: 12 010 ML	Polotovár: Ø65-250 ČSN EN 10060	Hmotnost: k dispozici	Tolerování: ISO 8015
Druh dokumentu: VÝKRES SOUČÁSTI		Název: ?	Promitání: ≡
Kreslil: [redacted]		Přetrženo podle ISO 16016	
Schválil:		Název: Pastorek	
Datum vydání: 25.04.2018		Číslo dokumentu: P-3B/17	



Res

první ?

ISO 2768-mH

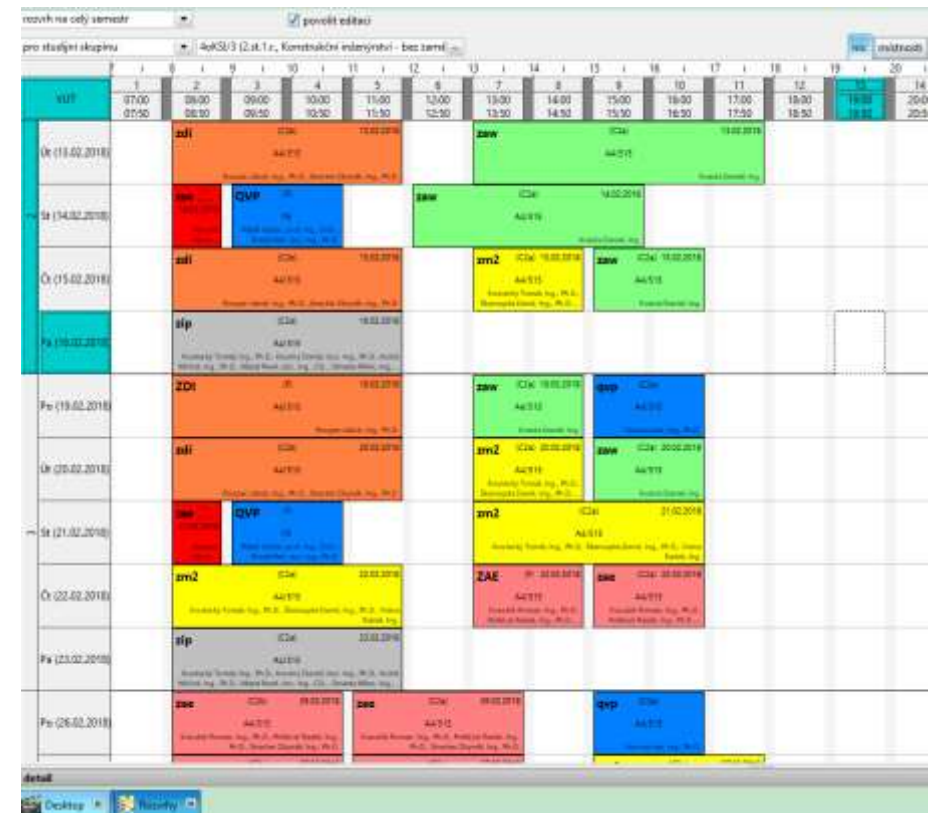


# Coordination

## Coordination of courses in 4th and 5th year of master degree study – Mechanical Engineering Design branch

### Tasks:

- preparing financial budget
- organization of the timetable
- organization of the project oriented courses
- babysitting (students and teachers alike 😊)



## Coordination

**“Speed has never killed anyone, suddenly becoming stationary... that’s what gets you.”**

**— Jeremy Clarkson**



# Thanks for attention

**Milan Klapka**

Milan.Klapka@vut.cz



ÚSTAV  
KONSTRUOVÁNÍ

[www.ustavkonstruovani.cz](http://www.ustavkonstruovani.cz)